



EASI-FLO DRAINAGE PUMP Series

As Easy As 123



EASI-FLO DRAINAGE PUMP Series

As Easy As 123

Drainage of air-conditioner condensate water, a long existed problem, is solved as easy as 123 with Acson Easi-Flo Series. No more wall hacking, no more dust, no more noise, no more time wasting, no more fix installation location; now you can live more freely without the restrictions and constraints. A solution that is designed to your needs in mind.

Common Features

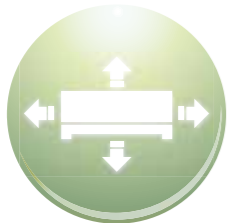
● Hassle Free

Still using a conventional drain pipe for condensate water? It's time to change. With Easi-Flo Series, a small drainage tube is used to flow the water out without messy wall hacking and wall concealation. The installation is complete when you wake up from a nap. Why not?



● As You Wish

The location of the air-conditioner can be installed above your bed, above your wardrobe, above your make-up table or as per your wish, no more restrained by the drain pipe. With the high lift and the distance it can go, the unit can be installed at the best location you most desired.



● Real Power Pump

With the specially designed motor, the torque is great enough to expel water and a greater height of discharge is allowed. It has a long lifetime of 15,000 hours. Motor bracket seal is adopted to prevent dust from attacking and the coil bobbin is protected from oxidation with high grade tape.

● Say NO to Blockage

Large rotor radius generates high torque to expel condensate water easily. Unique dual-face rotary design with extra large inlet hole able to expel contaminants aggregated at the bottom of container with ease. No more blocked tube.

10m anti-fungus PVC tube is included

● Quiet Operation

Recognising that noise is a concern to you, a unique vibration-absorption suspension system is designed to further reduce the motor noise level.

● Versatility

The Easi-Flo is not only designed for a single brand air-conditioner, but it suits any brand of air-conditioners. With its wide range of product line-up, you'll find one that suits your needs.



● Style with Ease

The modern and simple design is easily blended into any interior and synonymous with your air-cond design. Regular cleaning is simple by wiping the front cover. With no unsightly drain pipe noticeable, the only remaining is aesthetic appeal of your decoration.



● Safety is Priority

- Made of fire retardant ABS with UL94V-0 standard.
- UL certified power cord with grounded wire offer better electrical protection.
- Circuit is protected by temperature fuse.*
- Thermal protector is equipped to cut off automatically when there is abnormal temperature rise.**

* Easi-Flo II, 22, 33 & 55

** Easi-Flo 100 & 200

● Peace of Mind Service

With nationwide service points, there must be one around you to provide fast and reliable service when assistance is needed. 1 year warranty are provided.

**Please refer to our warranty policy*



EASI-FLO II Precision Engineered



Equipped with light detecting flow switch, the precise Easi-Flo II is more durable and smarter by giving signal when necessary. A must have for you who are just looking for more.

● Electronic Eye

Light detecting flow switch act as the eye of Easi-Flo II to watch out for condensate water level for a more precise control.

● Overflow Protection

An overflow LED light will lid and buzzer will activate when there's a malfunction occurs. You are protected.

● Waterproof PCB

The PCB comes with a good waterproof sealing as protection. Worry no more about short circuit. It extends the lifespan of the unit too.

EASI-FLO 33 The Essential



Easi-Flo 33 comes with the requirement that suit your basic needs.

● High Drainage Capacity

Equipped with powerful motor, drainage capacity can go as fast as up to 1.8litre/min.

● Overflow Control

Easi-Flo 33 utilise the mechanical float switch control to detect the pump from overflowing. No more wet floors.

● Easy Installation

With just a few steps as easy as 123, you can enjoy the air- cond in a blink of eyes.

EASI-FLO 22 Simply Powerful



With its high efficiency motor, Easi-Flo 22 is suitable for those who opt for high power motor.

● High Pump Lift and Drainage Capacity

Using the powerful motor, Easi-Flo 22 can achieve a maximum pump lift as high as 3.0m when flow rate is at 0. Not to be forgotten, drainage capacity can go as high as 2.0litre/min.

● Large Tank

Easi-Flo 22 can store as much as 600ml amount of your air-cond condensate water.

● Overflow Control

Easi-Flo 22 utilise the mechanical float switch control to detect the pump from overflowing. No more wet floors.

EASI-FLO 55 The Insignificant Others



Functionally like the others, Easi-Flo 55 is small and energy saving.

● Smaller in Size

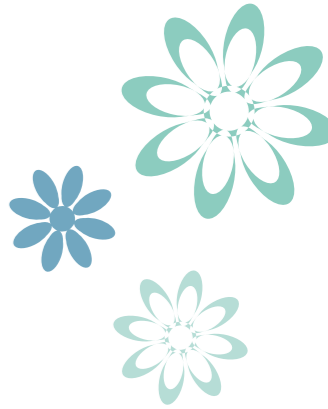
With the compact outlook, one is able to install it anywhere they want, be it residential or commercial application. It is compact in size yet doesn't compromise in performance.

● Check Valve Accessory

Easi-Flo 55 comes with a check valve accessory to prevent the water from backflowing. Worry free.

● Energy Saving & Low Sound Level

Easi-Flo 55 has the lowest power consumption in the whole range. The low sound level is offset with the motor.



EASI-FLO 100 The Mighty



The Mighty Easi Flo are built with a mighty tank and draining rate which meet your mighty needs. Size does matter!

- **Mighty Drainage Speed**

With its large 2.5litre/min draining rate, the Easi-Flo 100 can pump out condensate water as quick as a wink.

- **Mighty Volume**

Easi-Flo 100 can store as much as 850ml amount of condensate water.

- **Flexible Installation**

Easi-Flo 100 can be installed using different size of draining tube, 4mmx6mm and 9.5mmx11.5mm.

It can be placed on a shallow ceiling, or in the air-cond unit like ceiling concealed or floor standing.

Easi Flo-100 comes with 5 inlet holes, 4 holes on the top and a hole at the side of the unit which makes your installation more flexible and easier than ever.

EASI-FLO 200 The Undisputed



The Easi-Flo 200 is unquestionably the best of the best.

- **Mightier Draining Speed**

With its mighty 7litre/min draining rate, the Easi-Flo 200 can pump out condensate water as quick as a wink.

- **Mightier Volume, The Better**

Volume as large as a big bottle of soft drink, the Easi-Flo 200 tank can accommodate a very big space of condensate water for your air-cond.

- **Mighty Throat**

In order to fulfill its mighty appetite, 10m of 9.5mmx11.5mm hose is included.

- **Patented Quick Release Duckbill Check Valve**

Unlike other check valve, the quick release duckbill check valve can be removed without using any tools. Designed with the convenience in mind.

SPECIFICATIONS

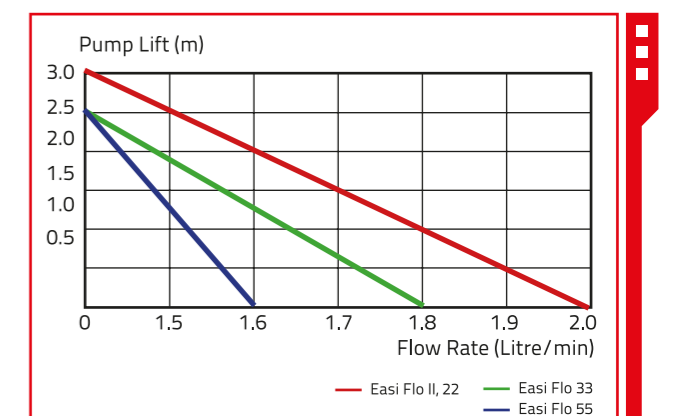
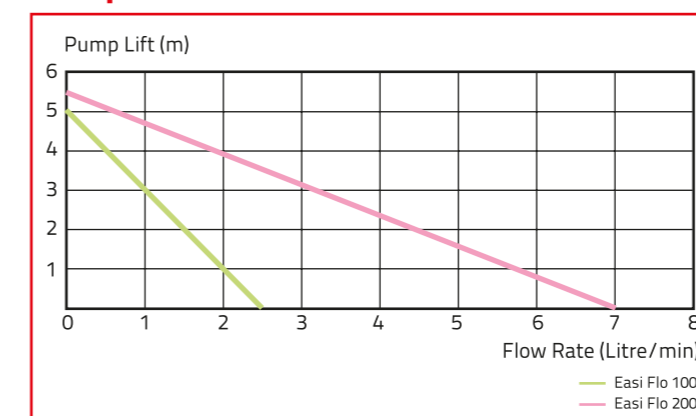
Model		Easi-Flo II	Easi-Flo 22	Easi-Flo 33	Easi-Flo 55	Easi-Flo 100	Easi-Flo 200
Part No		PB 10245(SP)	PB 20245(SP)	PF 10245(SP)	PF 20245(SP)	PE 60245(SP)	PH 71245(SP)
Power Rating		AC240V, 50Hz	AC240V, 50Hz	AC240V, 50Hz	AC240V, 50Hz	AC240V, 50Hz	AC240V, 50Hz
Power Consumption	W	18	18	18	14	58	68
Dimension (L x W x H)	mm	190 x 110 x 150	190 x 110 x 150	180 x 102 x 140	180 x 102 x 135	250 x 110 x 140	290 x 128 x 168
Weight	kg	1.7	1.7	1.5	1.4	1.8	2.2
Max Flow Rate	litre/min	2.0	2.0	1.8	1.6	2.5	7.0
Sound Level	db	43	43	39	39	50	50
Lifetime	hours	15000	15000	15000	15000	15000	15000
Tank Volume	ml	600	600	400	400	850	1500
Draining Tube	Inner diameter, mm	4.0	4.0	4.0	4.0	4.0	9.5
	Outer diameter, mm	6.0	6.0	6.0	6.0	6.0	11.5
	Type	Insulated Anti Fungus PVC Tube					
Max Air Conditioner Draining Pipe	Diameter, mm	25	25	20	20	20	30
Applicable Air Conditioner	Up to (hp)	3	3	3	3	10	15
Max Drainage tube Installation	Horizontal (m)	10	10	10	10	15	15
	Vertical (m)	1.5	1.5	1.5	1.5	4.0	4.0

*Refer to graphs below for details

FEATURES

Model	Easi-Flo II	Easi-Flo 22	Easi-Flo 33	Easi-Flo 55	Easi-Flo 100	Easi-Flo 200
Part No	PB 10245(SP)	PB 20245(SP)	PF 10245(SP)	PF 20245(SP)	PE 60245(SP)	PH 71245(SP)
Mechanical Float Switch Control	x	√	√	√	√	√
Electronic (Optical Sensor) Float Control	√	x	x	x	x	x
Operating Light	Green LED	x	x	x	x	x
Overflow Light	Red LED	x	x	x	x	x
PCB	Waterproof	x	x	x	x	x
Overflow Safety Switch	x	x	x	x	√	√
Fire Retardant	√	√	√	√	√	√
UL certified power cord	√	√	√	√	√	√
Duckbill Check Valve	x	x	x	x	√	√
Temperature Fuse	√	√	√	√	x	x
Thermal Protector	x	x	x	x	√	√

Pump Lift Vs. Flow Rate



ACSON MALAYSIA SALES & SERVICE SDN.BHD. (129688-D)

a member of **DAIKIN** group

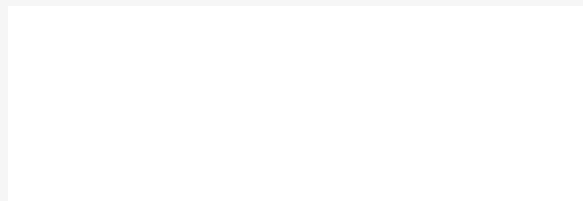
Lot 4, Lorong 19/1A, Seksyen 19, 46300 Petaling Jaya,
Selangor Darul Ehsan, MALAYSIA.

Tel : +603 7964 8200 Sales Fax : +603 7956 9909

Service Fax : +603 7956 9907 Acson Careline : 1300 22 3344

Penang : +604-5377 176	Pahang : +609-5178 696
Perak : +605-3129 828	Kelantan : +609-7405 233
Melaka : +606-2926 196	Sarawak : +6082-344 128
Johor : +607-3551 599	Sabah : +6088-420 205

Authorized Dealer :



Products manufactured in an ISO certified facility.
This document contains the most current product information as of this printing.
For the most up-to-date product information, please logon to www.acson.com.my

www.acson.com.my